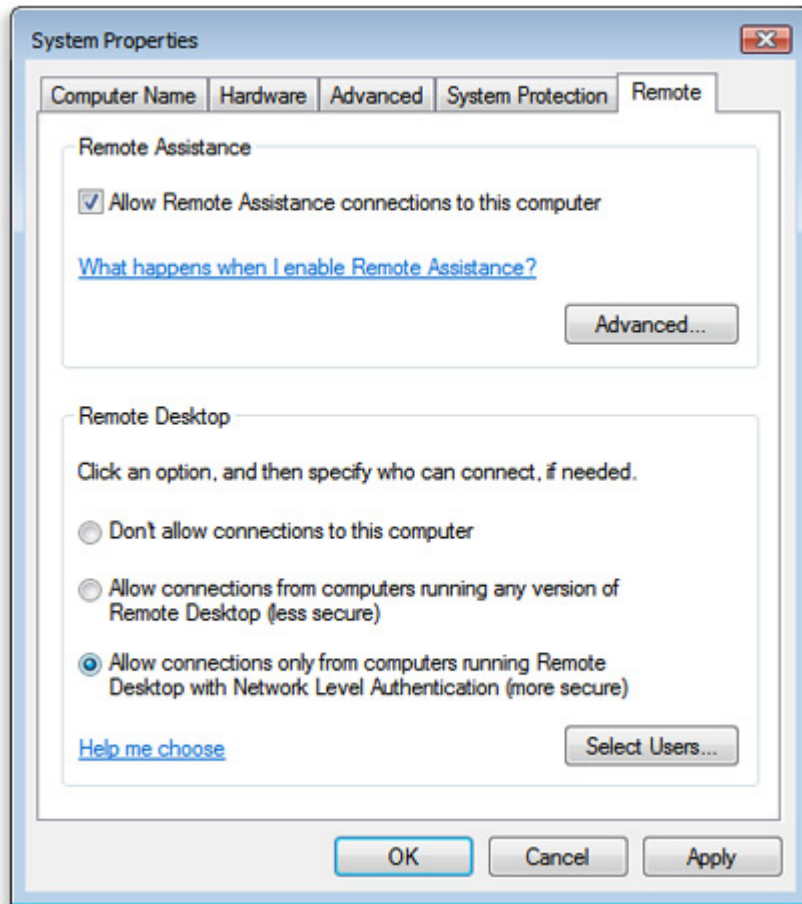


Remote Desktop Connection

Setup



1. Open System by clicking the **Start** button, right-clicking **Computer**, and then clicking **Properties**.
2. In the left pane, click Remote settings. Administrator permission required If you're prompted for an administrator password or confirmation, type the password or provide confirmation.
3. Under Remote Desktop, select one of the options to allow connections.
4. Click Select Users.
5. In the **Remote Desktop Users** dialog box, click **Add**.
6. In the **Select Users or Groups** dialog box, do one or more of the following:
 - To specify the search location, click **Locations**.
 - To specify the types of objects (user names) that you want to search for, click **Object Types**.
 - In the **Enter the object names to select** box, type the user name that you want to search for, and then click **Check Names**. If the user name isn't found, click **Advanced** to run an advanced search.
7. When you find the correct name, click **OK**. The name will be displayed in the list of users in the **Remote Desktop Users** dialog box.
8. Click **OK**, and then click **OK** again.
9. Make sure **Port 3389** is open in your firewall.

Connecting through a SSH tunnel

- To connect through a SSH tunnel, tunnel a higher source port (e.g. 33389) to the destination:3389.

Special commands

- To Ctrl-Alt-Del into the remote machine, use Ctrl-Alt-End.

External Links

- [Allow Remote Desktop connections from outside your home network](#)
- [Allow someone to connect to your computer using Remote Desktop Connection](#)
- [Restart or Shut Down a Remote Computer and Document the Reason](#)
- [Enable the Remote Registry Service](#)

From:

<https://wiki.condrau.com/> - **Bernard's Wiki**

Permanent link:

<https://wiki.condrau.com/outd-7:rdc>

Last update: **2016/02/11 12:38**

